

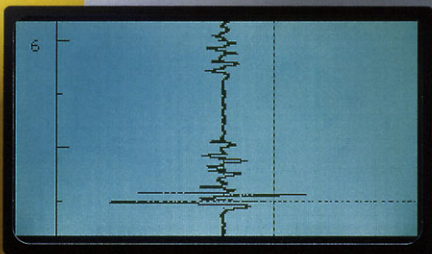
ELOTEST IS



Quality Assurance During Production



ELOTEST-IS



ANALOG



RS 232



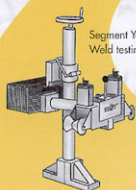
UNLOCK/
LOCK



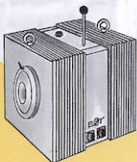
ELOTEST IS

elot
Rohmann GmbH

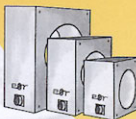
ELOTEST



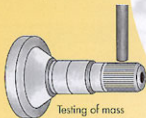
Segment Yoke -
Weld testing in the line



Magnetization Yoke -
Testing of tubes IAW DIN, API etc.



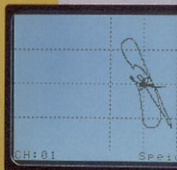
Sorting Coils -
Quality and dimension control



Testing of mass
Produced parts during
production



Quality control and detection of flaws in wires, rods and tubes



ANALOG

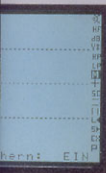


RS 232

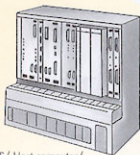


UNLOCK/
LOCK

EST-IS



Computer system



SPS/ Host computer/
control and evaluation module



Printer

ELOTEST IS -

The Efficient System Concept - Eddy Current Testing in the Production Line

Non-destructive material testing using eddy currents facilitates the detection of material defects such as cracks and other non-homogeneities in almost any electrically conductive material.

The ELOTEST IS evaluates the electrical conductivity and the magnetic characteristics of the test material. The quality of the material and alloyed condition as well as any deviations in consistency, hardness and geometry are recorded.

The areas of application in the production line are optimized for automatic tests and evaluations of parts passing through the test site as well as routine tests of mass-produced pieces.

The system is operated via a clearly defined key-pad. Due to the plain assignment of the functions to the 9 keys even non-experts can quickly learn to operate the instrument. The operation is also aided by clear on-screen text displays.

64 applications (instrument set-ups) can be stored in the instrument and are called up by the operator or via the RS232-interface.

Micro-processor control and communication interfaces facilitate an easy integration into production and testing procedures.

Depending on individual requirements, up to 64 channels may be operated (constructed as an 19" system).

Technical Data

CONSTRUCTION

General

- Compact system instrument with either 1 or 2 channels
- Closed aluminium diecast housing IAW protective system IP 54
- All operation elements on the front panel, connections on the internal terminal strip
- Dimensions of the housing: 240 mm wide, 290 mm high, 175 mm deep
- Mains operation: 90 - 240 V, 50/60 Hz
- Weight: about 8 kg
- Ambient Temperature: 0 - 40 °C

Operation

- Functional panel with operation keys and high-contrast graphic LCD-display with a high resolution of 128 x 240 points, monochrome
- LED-status displays for power supply, indication of system errors and threshold crossings
- Key-pad with 9 function keys
- 9-pin (D-Sub-9) connection as RS232 interface for printer/ host computer
- BNC-sockets for X- and Y-analog signals

Mounting/ Installation

- Suitable for wall brackets, swivel arm or stand
- Cable feed from below by PG-screwing or by cable channels inside the swivel arm

FUNCTION

Test channel functions are micro-processor controlled and remote-controllable. Menu-guidance in 6 languages.

- Test channel with sine-frequency generator, adjustable in the range 10 Hz to 10 MHz, also available in frequency multiplex operation for multi-frequency sorting
- Driver amplifier up to 400 mA coil power, short-circuit proof
- Pre-amplifier selectable from 0 - 60 dB, 10 dB-steps
- Sensitivity between 0 - 60 dB, 1 dB-steps, Y-axis spread, adjustable up to 20 dB in 1 dB-steps.
- Bandpass filter from 0 Hz to 1 kHz, separate high- and low-pass filters, adjustable
- Signal vector can be continuously adjusted in 1-dB-steps from 0 to 359°, threshold represented on the display, 64 storage places for parameter sets, extendable
- RS232-interface configured by the menu as host or printer interface
- Picture memory to store the test signals and to print out a reference flow protocol
- Defect evaluation can be set up by using different types of thresholds
- Stripchart mode to record longer test cycles from 10 sec to 8 h, registration of time and individual parts as efficient trend analysis in the production line

INTERFACES

- Inputs: Test on, Pulse, Compensation
- Outputs: System ready, Threshold signals, Analog X/Y signal (10 Vss)
- BNC sockets on the operation panel for external recording of analog signals (10 Vss)
- Communication: RS232/ RS485, Printer/Host



ELOTES IS with stand



ELOTES IS MC in 19" housing

eor

Rohmann GmbH

Rudolf-Diesel-Str. 13
D- 67227 Frankenthal
Tel. 06233 / 3789-0
Fax 06233 / 3789-77

Internet: <http://www.Rohmann.de> • E-Mail: es-Rohmann@t-online.de